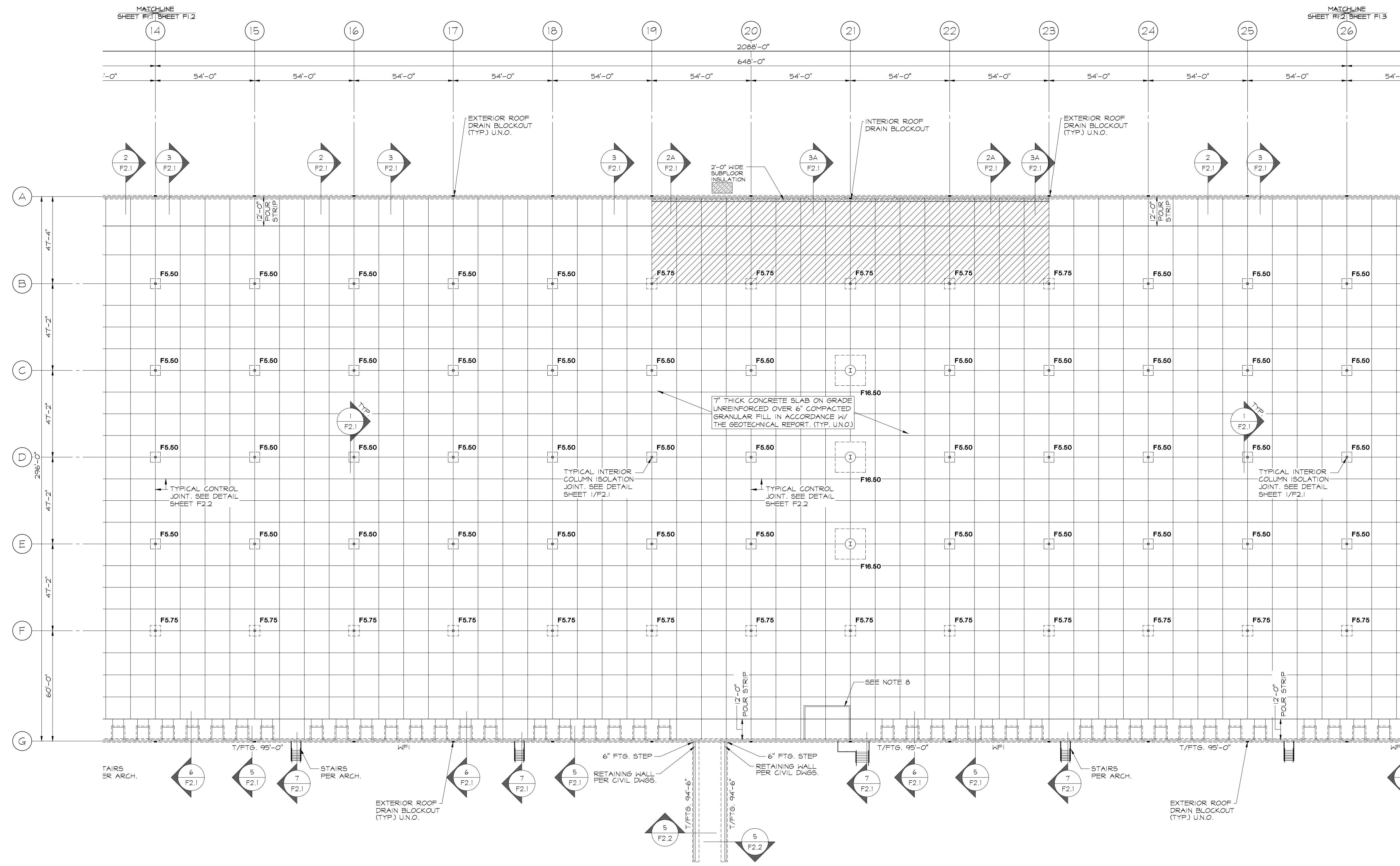


SUBMITTALS		
NO.	DATE	DESCRIPTION
1	2.1.2022	PROGRESS
2	2.28.2022	95% PROGRESS
3	6.8.2022	PERMIT
1	7.8.2022	FTG. STEPS
2	9.6.2022	AS NOTED
3	9.30.2022	100% BUILDING SET



**AREA "B"  
FOUNDATION PLAN**  
SCALE: 1" = 30'-0"

- NOTES:
1. FINISH FLOOR REFERENCE ELEVATION = 100'-0".
  2. TOP OF INTERIOR COLUMN FOOTING ELEVATION = 99'-0" U.N.O.
  3. TOP OF EXTERIOR FOOTING ELEVATION = 99'-0" U.N.O.
  4. COORDINATE ALL DOOR OPENINGS AND LOCATIONS WITH ARCHITECTURAL DRAWINGS.
  5. VERIFY LOCATION OF ALL FOOTING STEPS WITH PANEL DRAWINGS PRIOR TO CASTING FOOTINGS.
  6. Hatched area indicates 10 MIL VAPOR BARRIER UNDER SLAB ON GRADE. REINFORCE WITH W4@4'-0" X W2@2'-0".
  7. VERIFY LOCATION OF BLOCK OUTS FOR DOWNSPOUTS WITH PLUMBING DRAWINGS PRIOR TO CASTING FOOTINGS.
  8. 8" CHU RENF. W/ #4 @ 24" O.C. FULL HEIGHT. SEE DETAIL SHEET F2.2.
  9. PROVIDE JOINT FILLER IN SPEED BAY SLAB JOINTS.

WALL FOOTING SCHEDULE		
MARK	FOOTING SIZE	FOOTING REINFORCEMENT
WF1	2'-0"x3'-2"	3 - #4 CONT. TOP & BOT. W/ #3 TIES @ 60" O.C.
WF2	3'-6"x3'-2"	5 - #4 CONT. TOP & BOT. W/ #3 TIES @ 24" O.C.
WF3	3'-6"x3'-2"	SEE DETAIL S/F2.2

COLUMN FOOTING SCHEDULE		
MARK	FOOTING SIZE	FOOTING REINFORCEMENT
F5.50	3'-6"x3'-2"	6 - #5 EXL. BOT.
F5.75	3'-6"x3'-2"	6 - #5 EXL. BOT.
F6.50	16'-6"x16'-6"x3'-4"	16 - #8 EXL. TOP & BOT.

